

Year 6 Residential Brecon Beacons, Wales

Monday 19th September – Friday 23rd September 2021



STAFF

Mr Thomas
Mrs Sutcliffe
Mrs McLeish
Mr Blackall

We are likely to need more staff from school if the number of children increases, and these staff members could change depending on classes next year.

PURPOSE

- Support the learning that they are doing in class about the physical and locational geography of our world
- Develop team work skills
- Develop independence and responsibilities
- Increase children's confidence

DEPARTURE/RETURNING

- Monday – 9:30am
- Returning about 2:30pm on Friday



ACCOMMODATION

- Located in Brecon Beacons overlooking Pen y Fan
- Converted farmhouse
- Dormitories, lounge, kitchen, dining room, classroom and drying room



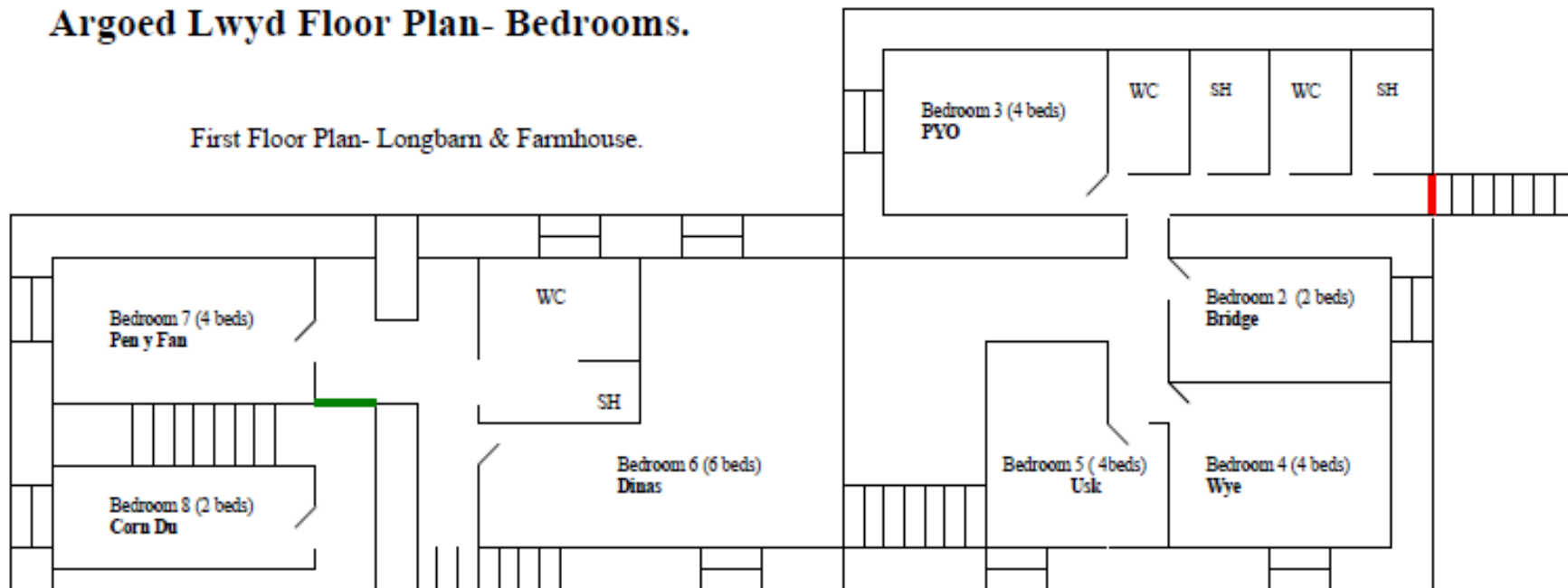
DORMITORIES

- Different sizes — 4, 6, 8
- Choosing who to share with
- Making the beds
- Storing their belongings
- Room competition



Argoed Lwyd Floor Plan- Bedrooms.

First Floor Plan- Longbarn & Farmhouse.

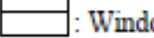




ANNEXE

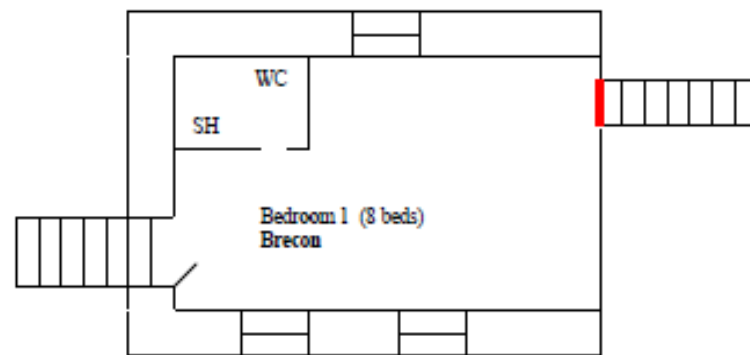
FARMHOUSE

L
O
N
G
B
A
R
N

Key:

- WC: Toilet.
- SH: Shower.
- : Fire Door.
-  : Window.
-  : Stair Case.
-  : Fire Exit-External.

Second Floor Plan- Farmhouse Only.



WEEK'S ACTIVITIES

- Caving
- Waterfall walk
- Canoeing
- Mountain Walk



















TIMETABLE

7:30am – Get up and wash

8:00am – Breakfast

9:00am – Daily duty

9:15am – Prepare for day's activities and meet instructor

10:00am – Depart for day's activities

Lunch will be during a break on the activity

4:00pm – Return from the activities

4:30pm – Daily duty, showers and games

6:00pm – Evening meal

7:00pm – Evening activity

9:00pm – Prepare for bed

9:30pm – Lights out!

DAILY DUTIES

- Sweep and tidy
- Hoovering
- Emptying bins
- Mopping
- Wiping surfaces
- Laying/clearing the table
- Room tidy – room checks and rewards!





MEALS



- Breakfast – juice, cereals, toast, a hot, cooked breakfast every day
- Packed lunch – sandwiches, crisps, fruit, snack bar – children will have the choice of white or brown bread and selection of fillings for their sandwiches.
- Afternoon snack on return.
- Cooked evening meal – vary each night.

COSTING

- Currently the price for the trip is roughly £375
- We can set up an instalment plan monthly with the office, rather than paying the full amount in one go
- This price also includes all food, your child will only need to be provided with a packed lunch on the first day. We stop to have lunch at a service station.

PACKING

- Kit list – warm, waterproof clothes including gloves, hat and scarf, a complete change of clothes each day and inside shoes/slippers.
- Book/small game/puzzle (no electronic games)
- Small waterproof rucksack
- Torch
- Single bed sheet, duvet cover and pillow case
- Two towels
- Packed lunch for the first day (in a carrier bag)
- Wellington boots
- Water bottles (named)
- Hampshire Mountain Centre have enough walking boots, waterproofs and rucksacks for all children (and adults) to borrow if needed.

Keeping you informed!

- We will update Class Dojo throughout the week with photos and information about what the children are up to.



The screenshot shows the homepage of Nightingale Primary School. The header features the school's name, a logo of a tree made of colorful leaves, and a navigation menu with links for Home, Nightingale's Ethos, Information, Children, News & Events, Community, and Contact Us. A search bar and a language selection dropdown are also present. The main content area displays a news article titled "Brecon Beacons October 2017" with a sub-header "Home » Children » Brecon Beacons October 2017". The article text reads: "The Nightingale party all arrived safely at their destination in the Brecon mountains, even if the coach journey took a little longer than expected due to the driver taking a wrong turn! On arrival the weather and the scenery were truly spectacular." Below the text are two side-by-side photographs showing a group of children sitting on a bus, smiling and waving.

QUESTIONS

